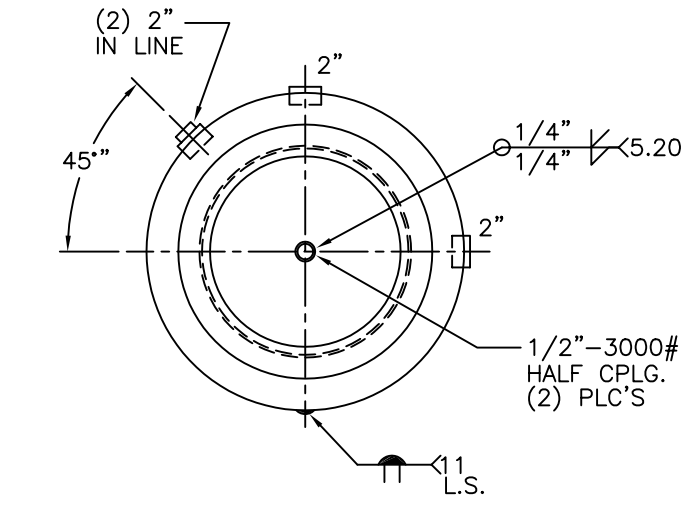
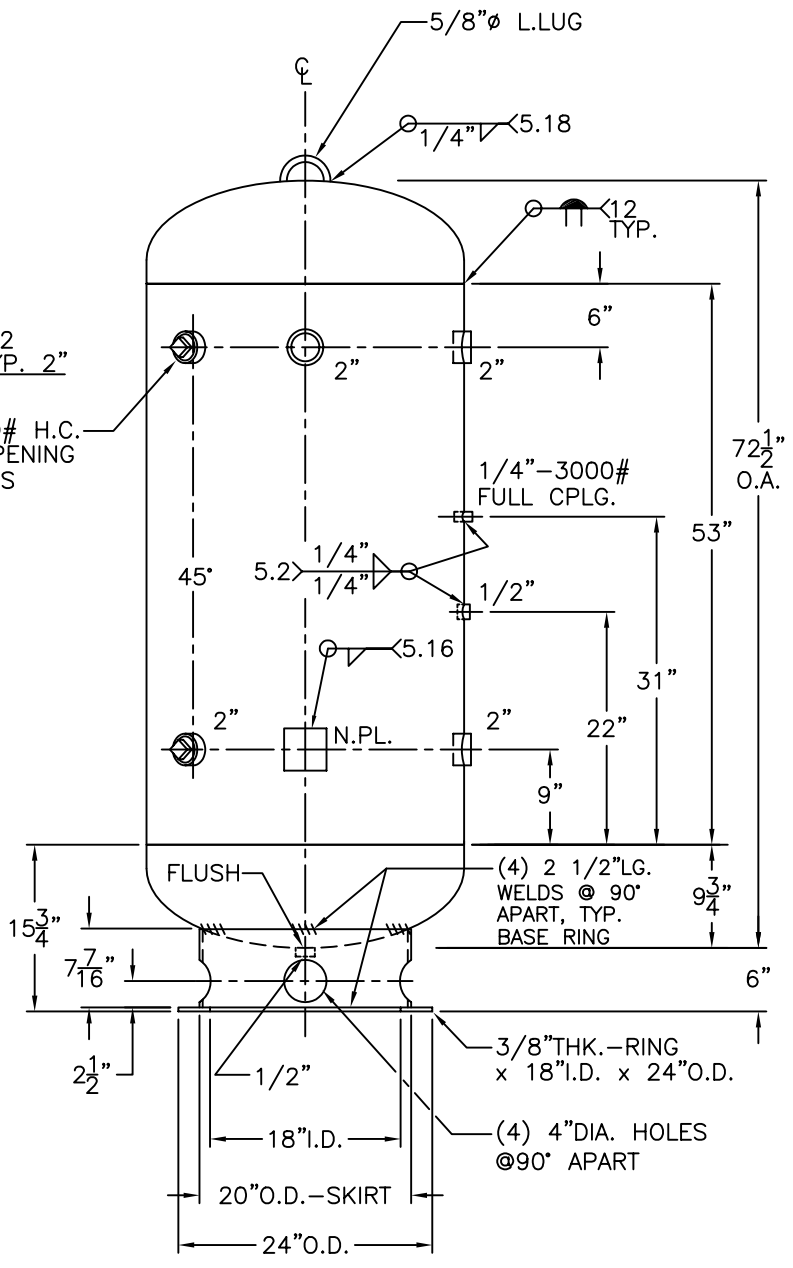


2"-3000# HALF CPLG. (3) PLC'S

2"-3000# H.C. INSP. OPENING (2) PLC'S



NOTE: 1) PRE HEAT BEFORE WELDING TO 150°F
2) HYDRO @ 715 PSIG. MIN.

SHELL / HEADS	
.401" SA-455 2:1 S.E.	
(.390" MIN.) TRIM	
.500" SA-516-70	
M.A.W.P. 550 PSIG. @ 400 °F	
M.D.M.T. -20 °F @ 550 PSIG.	
ASME SECTION VIII DIV. 1, 2001 ADD 2002	
X-RAY: RT-4 SPOT L.S. & HDS. G.S.	
GALLONS: 200	WT. 1045 LBS.
SERIAL NO.	
N.B.	
30-VK-200-F	REV.
FOR: HANSON STANDARD	DATE: 12-23-02
VERT. AIR TANK	
INSIDE: UNPAINTED	
OUTSIDE: PRIME	
CAD-"B" SIZE UNDER "STD"-SERIES	
BY: J.G.	SCALE: 1"=12"
ROY E. HANSON JR. MFG.	
1924 COMPTON AVE.	
LOS ANGELES, CA 90011	