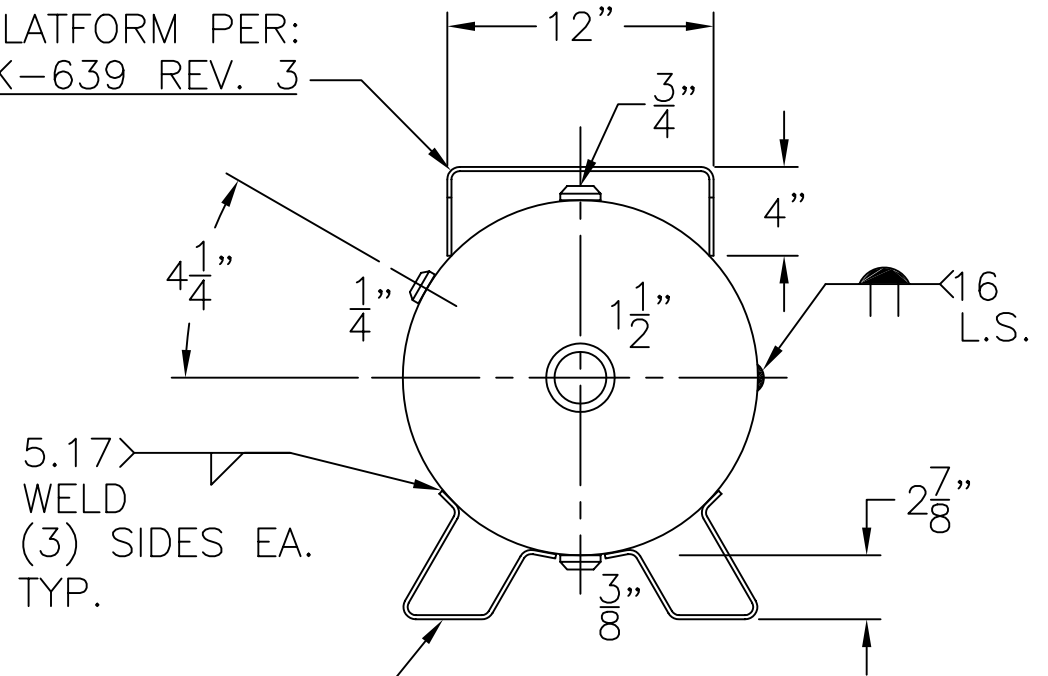
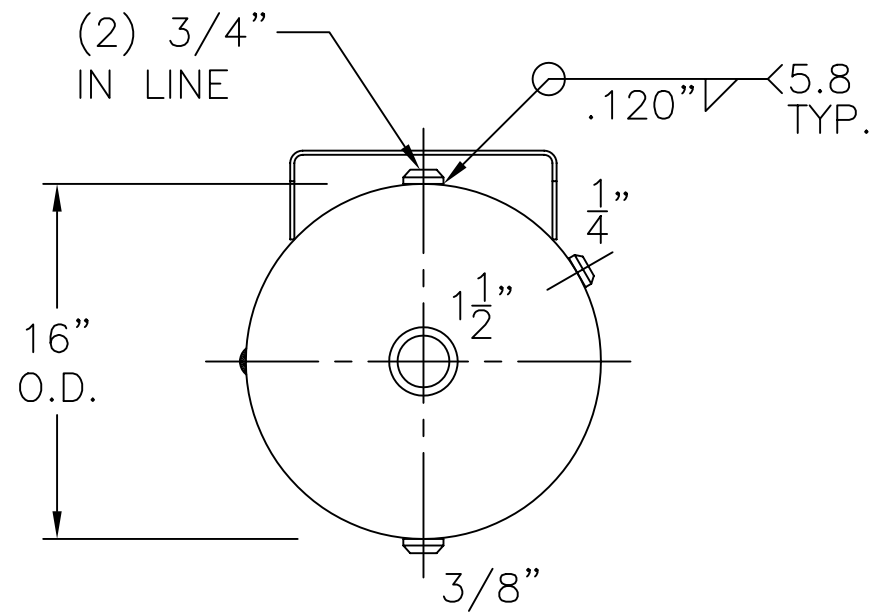


PLATFORM PER:
SK-639 REV. 3



FEET PER
SK-444



VIEW W/O SUPPORTS

NOTE: 1) HYDRO @ 326 PSIG. MIN.

HEADS	.135" SA-414-G 2:1 S.E.	HC-30-FP	REV. 12-8-05
	JOGGLE		DATE: 6-30-77
SHELL	.135" SA-414-G	FOR: HANSON STANDARD	
		HORIZ. AIR TANK	
M.A.W.P. 250 PSIG. @ 400 °F		INSIDE: UNPAINTED	
M.D.M.T. -20 °F @ 250 PSIG.		OUTSIDE: PRIME	
ASME. SECTION VIII DIV. 1, 2004 ADD. 2005		BY: E.S. SCALE: 1"=12"	
X-RAY: RT-NO		ROY E. HANSON JR. MFG.	
GALLONS: 30 WT. 132 LBS.		1924 COMPTON AVE.	
SERIAL NO.		LOS ANGELES, CA 90011	
N.B.			