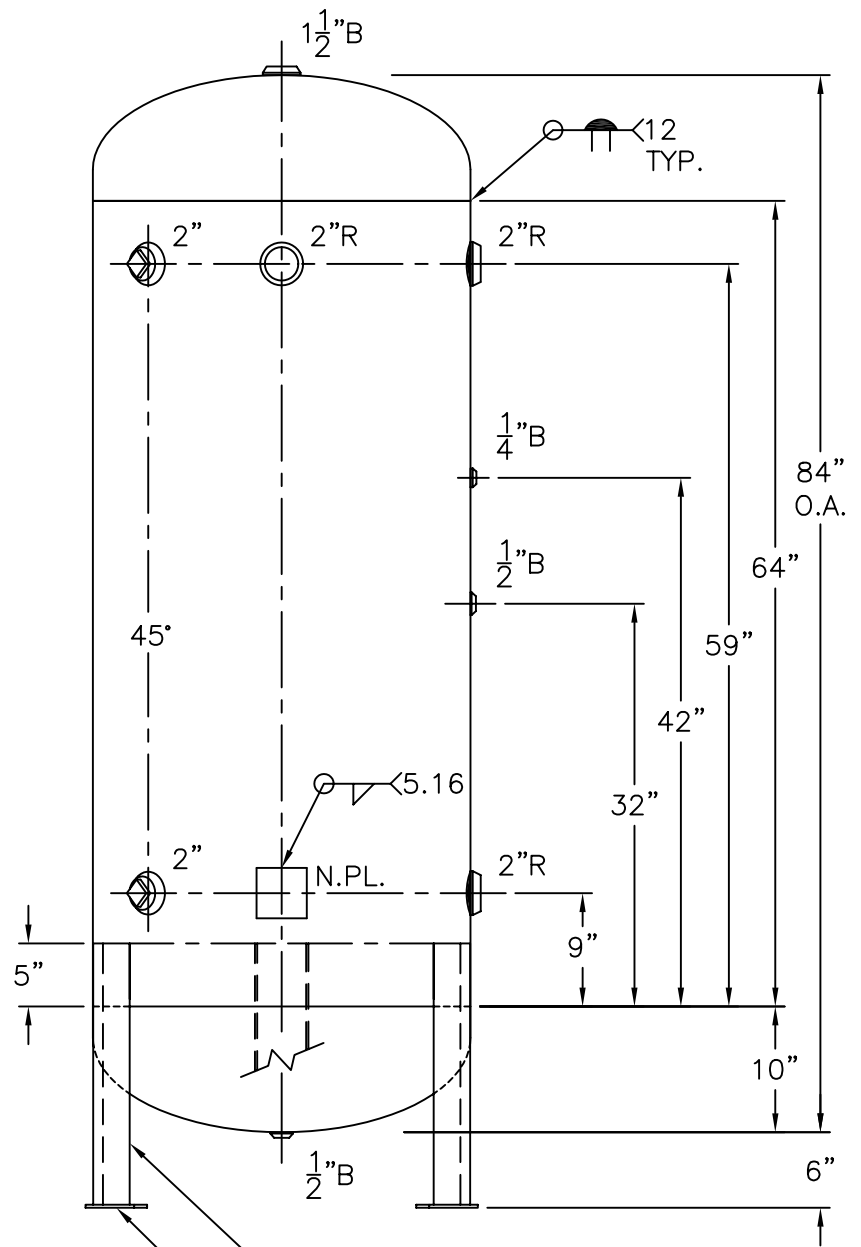


2"R W/ C.I. PLUG
INSP. OPENING
(2) PLC'S.



(3) 2 1/2"x 2 1/2"x 3/16"THK.
x 20 3/4"LG. ANGLE LEGS
(3) 4"x 4"x 1/4"THK.
PAD W/ 3/4"Ø HOLE

NOTE: 1) HYDRO @ 390 PSIG. MIN.

SHELL / HEADS	
.250" SA-455	2:1 S.E.
(.244" MIN.) JOGGLE	
.250" SA-455	
M.A.W.P.	300 PSIG. @ 400 °F
M.D.M.T.	-20 °F @ 300 PSIG.
ASME SECTION VIII	DIV. 1, 2001 ADD 2002
X-RAY: RT-4 SPOT L.S. NOT G.S.	
GALLONS: 240	WT. 662 LBS.
SERIAL NO.	
N.B.	

30-VD-240-1	REV. 8-13-03
FOR: HANSON STANDARD	DATE: 12-17-86
VERT. AIR TANK	
INSIDE: UNPAINTED	
OUTSIDE: PRIME	
LEG-ZONE 4-15 KM.	
BY: J.G.	SCALE: 3/4"=12"
ROY F. HANSON JR. MFG.	
1924 COMPTON AVE.	
LOS ANGELES, CA 90011	

