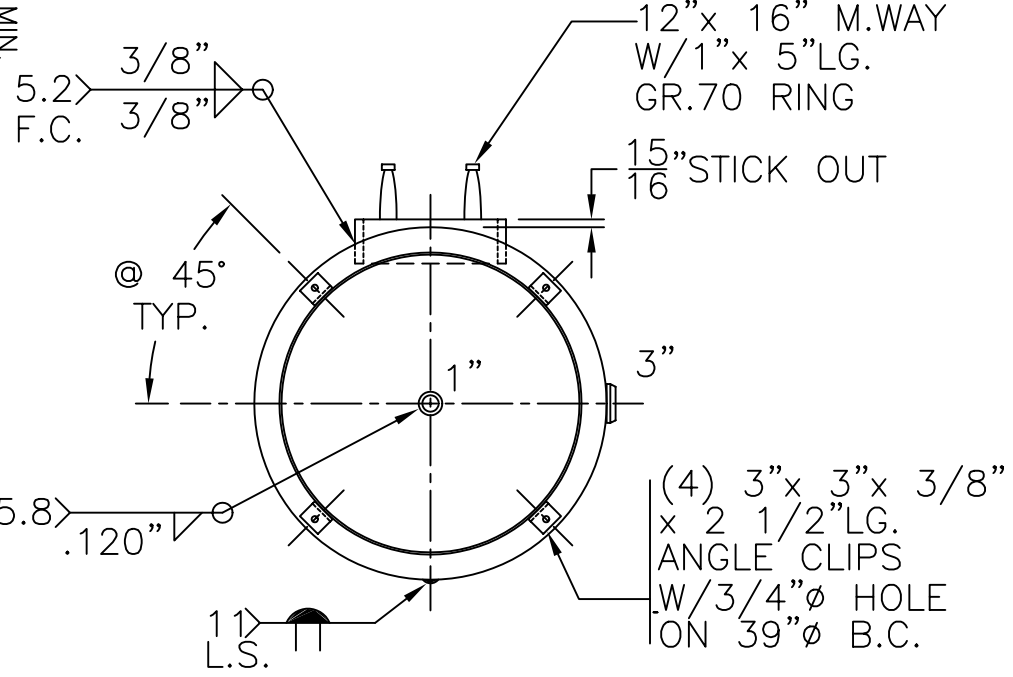


NOTE. 1) HYDRO @ 392 PSIG. MIN.

SHELL / HEADS	
M.A.W.P.	300 PSIG. @ 400 °F
M.D.M.T.	-20 °F 300 PSIG.
ASME. SECTION VIII	DIV. 1, 2004 ADD 2004
X-RAY:	RT-4 SPOT L.S. & HDS. G.S.
GALLONS:	660 WT. 2059 LBS.
SERIAL NO.	
N.B.	
.3125" SA-455 2:1 S.E. (.292" MIN.) TRIM	
.375" SA-455	



42-VD-660-R	REV. 4-21-05
FOR: HANSON STANDARD	DATE: 8-11-99
VERT. AIR TANK	
INSIDE: UNPAINTED	
OUTSIDE: PRIME	
BY: J.G.	SCALE: 1/2" = 12"
<b>ROY E. HANSON JR. MFG.</b>	
1924 COMPTON AVE.	
LOS ANGELES, CA 90011	